

Transformer **T**emperature **M**onitor

Specification

Inputs

3 wire PT100, class B
5 amp CT (0-1 to 0-10A user selectable)
Fans & Pumps CT's or
contact closure
Contact rating: 5A
(Breaking: 110VDC/0.4A)

Environmental:

Temperature range: **-10-70** Deg C
(Excursions to **80** Deg C)
Damp Heat to IEC 68-2-30

Power supply:

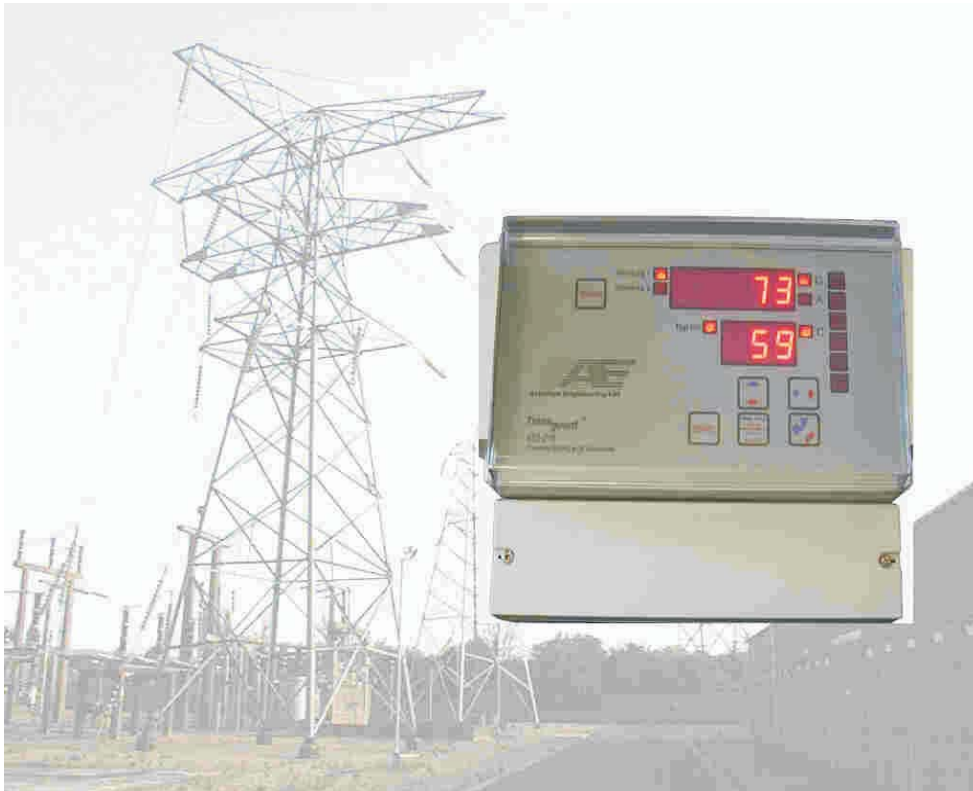
Universal, 44-265Vac, 44-260Vdc
Power consumption:<10VA

Dimensions:

220 (W) X 184 (H) X 104.5 (D)

Fixing dimensions:

198 (W) X 145 (H)



The 852-216 from Ashridge Engineering

The new 852 range from Ashridge Engineering offers dual display on all models (continuously indicating Top Oil and Hot Spot temperatures), suiting all applications from a single winding temperature indicator with no cooling system through to dual windings and 6 output relays for complex cooling systems.

Original features only found on the 852 range include full monitoring of Fan and Pump running currents with 'deviation from normal' alarm relay output. 1 to 3 gradient selection, Optional Auto Cool mode, allowing Cooler exercising at timed intervals between 1 and 30 days plus many other features offering substantial benefits to the user.

Full isolation is maintained between input and all outputs for maximum system integrity.

All models may be AC or DC powered over an operating range of **44 to 265 Volts AC/DC**

“Hot Spot” oil temperature correction conforms to IEC 354

Models offered are:

852-112 (single winding, Top oil input and watchdog, alarm & trip relays)

852-113 (single winding, Top oil input and watchdog, pump, alarm & trip relays)

852-116 (single winding, Top oil input and watchdog, fan, pump, cool fail, aux, alarm & trip relays)

852-216 (dual windings, Top oil input and watchdog, fan, pump, cool fail, aux, alarm & trip relays)